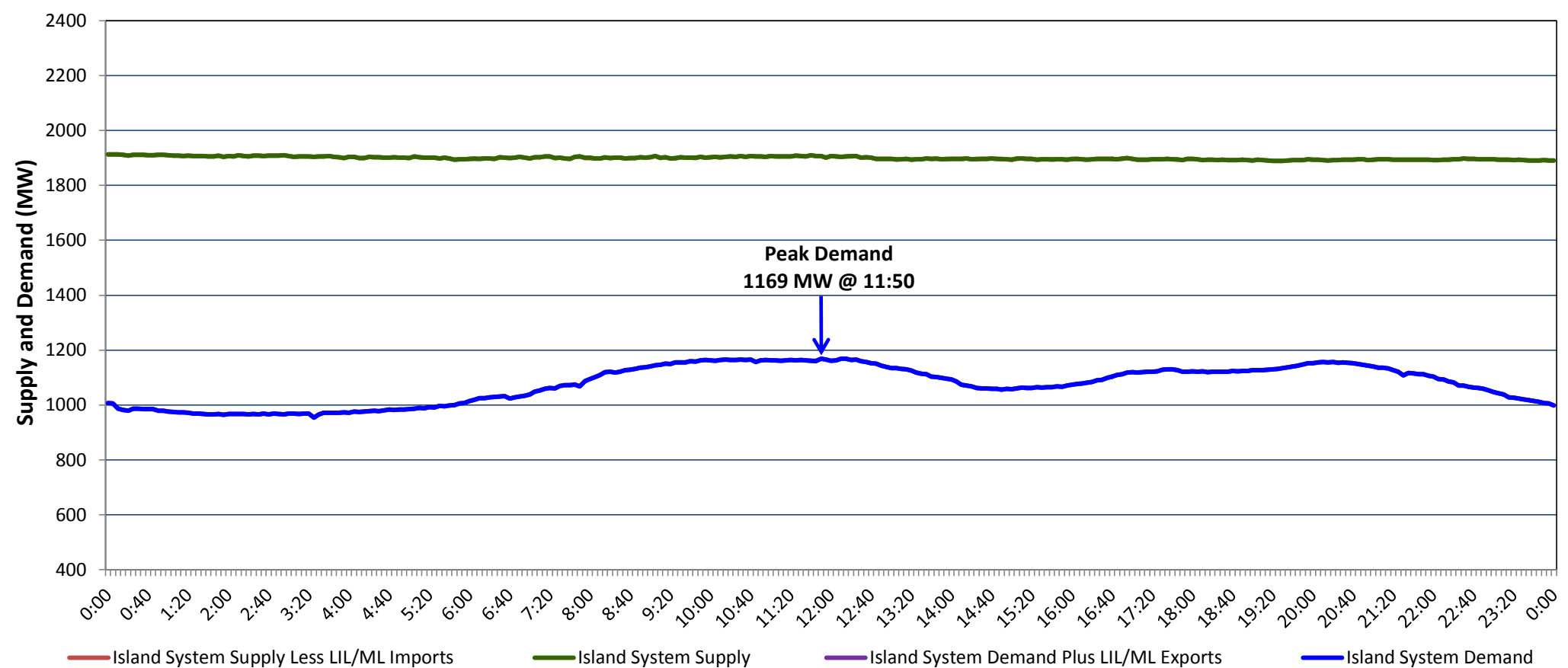


**Newfoundland Labrador Hydro (NLH)  
Supply and Demand Status Report Filed Monday, April 06, 2020**

**Section 1  
Island Interconnected System Supply, Demand & Exports  
Actual 24 Hour System Performance For Saturday, April 04, 2020**



**Supply Notes For April 04, 2020**

1,2

- A As of 0847 hours, March 19, 2020, Holyrood Diesels available at 8 MW (10 MW).  
B As of 1054 hours, March 31, 2020, Holyrood Unit 3 removed from service for economic dispatch (150 MW).

**Section 2  
Island Interconnected Supply and Demand**

Sun, Apr 05, 2020	Island System Outlook <sup>3</sup>		Seven-Day Forecast	Temperature (°C)		Island System Daily Peak Demand (MW)	
				Morning	Evening	Forecast	Adjusted <sup>7</sup>
Available Island System Supply: <sup>5</sup>	1,875	MW	Sunday, April 05, 2020	-3	-3	1,165	1,072
NLH Island Generation: <sup>4</sup>	1,540	MW	Monday, April 06, 2020	-4	-1	1,260	1,165
NLH Island Power Purchases: <sup>6</sup>	120	MW	Tuesday, April 07, 2020	-1	-1	1,195	1,101
Other Island Generation:	215	MW	Wednesday, April 08, 2020	-3	-1	1,230	1,136
ML/LIL Imports:	-	MW	Thursday, April 09, 2020	-2	0	1,240	1,146
Current St. John's Temperature & Windchill:	-4 °C	-8 °C	Friday, April 10, 2020	0	3	1,195	1,101
7-Day Island Peak Demand Forecast:	1,260	MW	Saturday, April 11, 2020	2	0	1,095	1,002

**Supply Notes For April 05, 2020**

3

- Notes:
1. Generation outages for running and corrective maintenance are included. These are not unusual for power system operations. They generally do not impact customer supply. The power system operators schedule outages to system equipment whenever possible to coincide with periods when customer demands are low and sufficient supply reserves are available. However, from time to time equipment outages are necessary and reserves may be impacted.
  2. Due to the Island system having no synchronous connections to the larger North American grid, when there is a sudden loss of large generating units there may be a requirement for some customer's load to be interrupted for short periods to bring generation output equal to customer demand. This automatic action of power system protection, referred to as under frequency load shedding (UFLS), is necessary to ensure the integrity and reliability of system equipment. Under frequency events have typically occurred 5 to 8 times per year on the Island Interconnected System and the resultant customer load interruptions are generally less than 30 minutes. With the activation of the Maritime Link frequency controller during the winter of 2018, UFLS events have occurred less frequently.
  3. As of 0800 Hours.
  4. Gross output including station service at Holyrood (24.5 MW) and improved NLH hydraulic output due to water levels (35 MW).
  5. Gross output from all Island sources (including Note 4).
  6. NLH Island Power Purchases include: CBPP Co-Gen, Nalcor Exploits, Rattle Brook, Star Lake, Wind Generation and capacity assistance (when applicable).
  7. Adjusted for curtailable load, market activities and the impact of voltage reduction when applicable.

**Section 3  
Island Peak Demand Information  
Previous Day Actual Peak and Current Day Forecast Peak**

Sat, Apr 04, 2020	Actual Island Peak Demand <sup>8</sup>	11:50	1,169 MW
Sun, Apr 05, 2020	Forecast Island Peak Demand		1,165 MW

- Notes: 8. Island Demand / LIL / ML Exports (where applicable) is supplied by NLH generation and purchases, plus generation owned and operated by Newfoundland Power and Corner Brook Pulp & Paper (Deer Lake Power, DLP).